



东营市华侨橡塑有限责任公司  
DONGYING HUAQIAO RUBBER CO.,LTD.

## 斜交胎产品手册 BIAS TYRE PRODUCT MANUAL

超王  
固美金剛



# COMPANY PROFILE

## 企业简介

华侨集团（东营市华侨橡塑有限责任公司，山东沃森橡胶有限公司）隶属于中国最大的轮胎成长型企业之一、东营市规模最大的侨属企业，位于山东大王经济开发区。公司创建于1995年，从事全钢子午胎、半钢子午胎、工程胎、叉车胎、实心胎、橡胶氧气管、乙炔管的生产和销售。公司设备齐全，技术力量雄厚，现拥有大中型设备600余台(套)，年生产能力达到全钢子午线轮胎350万套、高性能绿色环保半钢子午胎1200万套、斜交载重汽车胎100万套、工业轮胎20万套、实心叉车胎10万套。现有在岗职工3000余人，其中工程师和科技人员200余人。

公司注重企业文化建设，逐渐形成了具有侨属企业特色的沃森文化体系，本着“以顾客需要为目标，以顾客满意为宗旨”的经营理念，坚持高起点、高标准、高质量，立足现实，着眼未来。2012年350万套全钢子午胎项目已全面投产，2014年5月高性能半钢子午胎投产运营。

公司生产的轮胎产品均采用国际先进生产技术，关键生产设备均达到国际先进水平。企业产品先后通过了国家强制性产品认证(3C认证)、安全标准化认证、ISO9001质量管理体系认证、ISO/TS16949质量管理体系认证和ISO14001环境管理体系认证，实验中心通过了CNAS国家实验室认可。同时获得美国DOT认证、欧洲ECE认证、中东GCC、巴西INMETRO等认证。公司荣获“世界杰出侨商协会会员单位”、“全国侨联系统先进单位”、“中国著名品牌”、“先进侨属企业”、“侨资企业联谊会常务理事单位”、“山东省橡胶行业50强企业”、“守合同重信用企业”、“东营市质量服务诚信单位”、“海关A类企业”、“中国农业银行AAA级用户”、“质量放心、重点保护品牌”等荣誉称号，是东营市最大侨属企业、山东省明星侨属企业。

公司生产的以沃森为主品牌的三十多种品牌产品以过硬的质量、良好的信誉畅销全国20多个省、市、自治区并出口美国、俄罗斯、加拿大、澳大利亚、欧洲、中东、东南亚等20多个国家和地区，深受用户青睐。

山东华侨集团沃森轮胎竭诚欢迎国内外新老客户莅临公司参观指导，建立长期共赢的合作伙伴关系！

Huaqiao Group(Dongying Huaqiao Rubber & Plastics Co.,Ltd and Shandong wosen rubber co., LTD) is the largest overseas Chinese enterprise in Dongying city and also one of the biggest growing tire companies in China. located in Dawang economic development zone of Shandong province. Established in 1995, the company is mainly engaged in the production and management of half-steel radial tire, all-steel tires, OTR tires, forklift tire, solid tires with well-equipment and strong technical force.

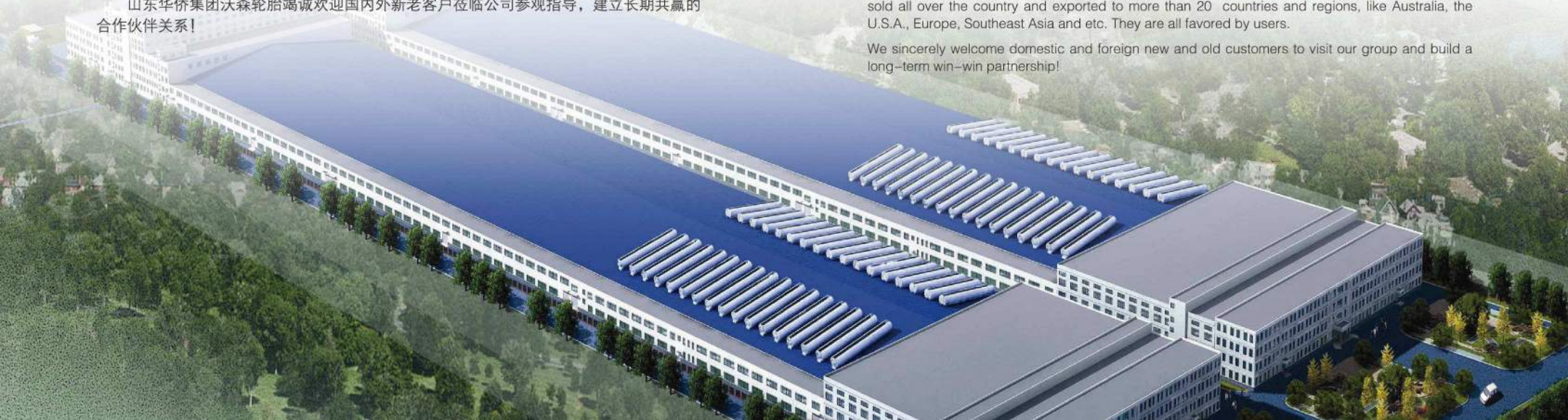
The company covers an area of 1 million square meters and currently has three major production areas. Fully-equipped with strong technical force, the company now has more than 600 sets of large and medium-sized equipments, 3.5 million sets of all-steel radial tires, 12 million sets of high-performance and environmental-friendly half steel radial tire, 1 million sets of heavy-load bias trucks tires, 200000 sets of heavy-load OTR tires, 200000 sets of industrial tires and 100000 sets of solid forklift tires. Now the company has about 3000 serving staff, including more than 200 engineers and technical personnels.

The company is well-equipped and has strong technical force. It now has more than 600 sets of large and medium-sized equipment. Over the years, with the managing spirit of "customer's need as the goal, customer's satisfaction as the purpose", the company adheres the principles of high starting point, high standard and high quality, operating based on reality and focusing on the future. In 2012, 3.5 million sets of all steel radial tire projects had gone into full production. In May of 2014, In May 2014, high-performance half-steel radial tire production operations with hankook technical force.

The tire products, wheel products of the company both adopt international advanced production technology. Key producing equipment can live up to the international advanced level. Those products had successively passed the U.S.DOT certification, the European ECE certification the middle east GCC certification and Brazil INMETRO certification. The enterprise had passed the ISO9001 quality management system certification and ISO14001 environmental management system certification. The tyre experiment center through the CNAS national laboratory accreditation. Meanwhile, it had won a series of honors continuously through the years, such as "World Outstanding Overseas Chinese Merchant Association Member Unit", "Chinese Famous Brand", "Excellent Overseas Chinese Enterprise", "Overseas Chinese Enterprises Association Executive Director Units", "Top 50 Enterprises of Rubber Industry in Shandong Province", "Credible enterprise", "Dongying Quality and Service Integrity Enterprise", "Customs A kind of enterprise", "Agricultural Bank of China AAA Grade User", "Quality assured and Key Protection Brand" and so on. It is the largest overseas enterprise in Dongying and a star overseas enterprise in Shandong province.

With high quality and good credibility, over 30 types of products the company produced had been sold all over the country and exported to more than 20 countries and regions, like Australia, the U.S.A., Europe, Southeast Asia and etc. They are all favored by users.

We sincerely welcome domestic and foreign new and old customers to visit our group and build a long-term win-win partnership!





# E3/L3

工程胎  
OTR TIRE



# L3

工程胎  
OTR TIRE

规格 Size	层级 PR	标准轮辋 Stand Rim	直径(mm) Overall Dia(mm)	断面宽(mm) Section Width(mm)	最大载重 Max Load(kg)		最大气压 Max Pressure(kpa)		重量(千克) Weight (kg)	装箱量 /40' GP QTY/40' HQ
					10km/h	50km/h	10km/h	50km/h		
29.5-25	28	25.00/3.6	1923	750	17500	11500	425	325	510.5	27
26.5-25	24	22.00/3.0	1750	675	13500	9132	385	325	277	37
26.5-25	28	22.00/3.0	1750	675	15500	10000	475	350	277	37
26.5-25	32	22.00/3.0	1750	675	16275	10500	498	367	343	35
26.5-25	36	22.00/3.0	1750	675	17089	11025	522.9	385.35	359.21	35
23.5-25	20	19.50/2.5	1615	595	10900	7300	375	300	213.5	50
23.5-25	24	19.50/2.5	1615	595	12500	8000	475	300	220	49
20.5-25	20	17.00/2.0	1490	520	8835	5580	420	304	164.5	70
20.5-25	24	17.00/2.0	1490	520	9500	6000	450	325	172.73	70
18.00-25	28	13.00/2.5	1615	500	13600	8000	650	500	194.4	58
18.00-25	32	13.00/2.5	1615	500	15000	8750	750	575	209.4	58
17.5-25	16	14.00/1.5	1350	445	7300	4250	475	300	105.5	90
17.5-25	20	14.00/1.5	1350	445	8250	5000	575	400	111	90
16.00-25	20	11.25/2.0	1495	430	10600	6000	650	475	172.35	74
15.5-25	20	12.00/1.3	1275	395	6800	3835	460	285	89.5	140
13.00-25	24	8.5	1300	350	8483	4990	665	500	105	138
16.00-24	20	11.25/2.0	1490	430	9494	5340	578.5	422.75	140.29	88
16.00-24	24	11.25/2.0	1490	430	10600	6000	650	475	147.31	88
14.00-24	16	10	1420	375	7565	4116.3	623	422.75	95.67	122
14.00-24	20	10	1420	375	8500	4625	700	475	101.8	122
16/70-20	20	13	1075	410	5150	2900	450	350	73.2	120
14.00-20	20	10	1265	375	7500	4375	700	525	82.85	122

规格 Size	层级 PR	标准轮辋 Stand Rim	直径(mm) Overall Dia(mm)	断面宽(mm) Section Width(mm)	最大载重 Max Load(kg)		最大气压 Max Pressure(kpa)		重量(千克) Weight (kg)	装箱量 /40' GP QTY/40' HQ
					10km/h	50km/h	10km/h	50km/h		
23.5-25	20	19.50/2.5	1615	595	10900	7300	375	300	213.5	52
	24	19.50/2.5	1615	595	12500	8000	475	300	220	50
17.5-25	16	14.00/1.5	1350	445	7300	4250	475	300	105.5	92
	20	14.00/1.5	1350	445	8250	5000	575	400	111	92
20.5/70-16	12	8.5	930	340	1980	-	350	-	38.5	120



# L5

## 工程胎 OTR TIRE

规格 Size	层级 PR	标准轮辋 Stand Rim	直径(mm) Overall Dia(mm)	断面宽(mm) Section Width(mm)	最大载重 Max Load(kg)		最大气压 Max Pressure(kpa)		重量(千克) Weight (kg)	装箱量 /40' GP QTY/40' HQ
					10km/h	50km/h	10km/h	50km/h		
29.5-25	28	25.00/3.6	1923	750	17500	12300	435	332	752.2	27
	24	22.00/3.0	1750	675	13500	9132	295	325	518.6	37
26.5-25	28	22.00/3.0	1750	675	15500	10000	475	350	539.7	36
	32	22.00/3.0	1750	675	16275	10500	498	367	549.2	35
	36	22.00/3.0	1750	675	17089	11025	522.9	385.35	565.74	35



# E3

## 工程胎 OTR TIRE

规格 Size	层级 PR	标准轮辋 Stand Rim	直径(mm) Overall Dia(mm)	断面宽(mm) Section Width(mm)	最大载重 Max Load(kg)		最大气压 Max Pressure(kpa)		重量(千克) Weight (kg)	装箱量 /40' GP QTY/40' HQ
					10km/h	50km/h	10km/h	50km/h		
13.00-25	24	8.5	1300	350	8483	4990	665	500	105	138
14.00-25	28	10.00/1.5	1370	375	10000	5600	925	650	130	-



# HQ001

实心叉车胎  
SOLID TIRE

# HQ002

充气叉车胎  
PNEUMATIC TIRE



规格 Size	标准轮辋 Stand Rim	直径(mm) Overall Dia (mm)	断面宽(mm) Section Width(mm)	重量(千克) Weight (kg)	装箱量 /40'GP QTY/40'HQ	载核量 Max Load(kg/kpa)					
						6mph/10km/h		10mph/16km/h		15mph/25km/h	
						Load	Steer	Load	Steer	Load	Steer
8.15-15(28x9-15)	7.00	700	215	55.3	310	4060	3125	3710	2855	3445	2650
8.25-15	6.50	818	203	85	230	5085	3910	4640	3570	4310	3315
8.25-12	5.00S	720	195	65	260	3425	2635	3125	2405	2905	2235
7.00-12	5.00S	654	170	45.4	430	3105	2390	2835	2180	2635	2025
6.50-10	5.00F	570	156	34	560	2715	2090	3485	1910	2310	1775
7.00-9	5.00S	550	168	34	520	2670	2055	2440	1875	2260	1740
18x7-8	4.33R	525	146	27	770	2430	1870	2215	1705	2060	1585
5.00-8	3.50D	455	158	21	950	1255	965	1145	880	1150	1000
4.00-8	3.00D	456	126	18	1210	1055	845	1020	765	950	715
4.00-8	3.75	423	115	9.5	1550	1145	915	1105	830	1030	775
21x8-9	6.00	535	189	35	272	2810	2250	2715	2035	2530	1895
23x9-10	6.50	595	211	52	272	3420	2735	3300	2475	3076	2305
7.00-15	5.50	759	186	64.5	272	3590	2872	2465	2600	3225	2420
7.50-15	6.50	774	215	73	265	4360	3490	4050	3040	3775	2835
7.50-16	5.50	819	181	77	257	3910	3130	3780	2835	3520	2640
250-15	7.00	735	235	77.5	260	4675	3740	4515	3385	4205	3155
300-15	8.00	838	256	115.5	165	5990	4790	5780	4335	5380	4035
27x10-12	8.00G	683	261	73	-	4465	3510	4315	3235	4020	3015

规格 Size	层级 PR	标准轮辋 Stand Rim	直径(mm) Overall Dia(mm)	断面宽(mm) Section Width(mm)	最大气压 Max Pressure (kpa)	重量(千克) Weight (kg)	装箱量 /40'GP QTY/40'HQ	载核量 Max Load(kg/kpa)					
								6mph/10km/h		10mph/16km/h		15mph/25km/h	
								Load	Steer	Load	Steer	Load	Steer
8.15-15(28x9-15)	14	7.00	710	220	1000	23.12	310	3285	2525	2970	2285	2735	2105
8.25-15	14	6.50	840	235	1000	28.45	230	4100	3155	3170	2855	3420	2630
300-15	18	8.00	840	300	830	42.86	175	6495	4995	5875	4520	5415	4160
8.25-12	12	5.00S	728	210	720	21.67	260	3750	2885	3395	2610	3120	2400
7.00-9	12	5.00S	676	190	860	16.22	430	2830	2175	2555	1965	2355	1810
6.50-10	10	5.00F	590	175	790	11.56	560	1965	1510	1775	1365	1640	1260
7.00-9	10	5.00S	590	190	860	11.55	520	2365	1820	2145	1650	1975	1520
6.00-9	10	4.00E	540	160	1030	9.92	770	1795	1380	1625	1250	1495	1150
18x7-8	14	4.33R	173	465	1000	8.5	950	1840	1415	1665	1280	1535	1180
5.00-8	10	3.50D	470	137	1000	6.14	1210	1295	995	1170	900	1080	830
27x10-12	12	8.00G	690	255	700	22	2725	3340	2570	3025	2325	2780	2140
23x9-10	12	6.50F	595	225	760	16	1460	2485	1910	2250	1730	2065	1590
23x9-10	16	6.50F	595	225	700	16	2425	2595	1995	2345	1805	2160	1660
7.50-15	12	6.00G	780	215	775	16	3290	3630	2795	3290	2530	3030	2330
7.00-15	12	5.50F	750	200	825	15	3035	3355	2580	3035	2335	2795	2150



# HQ003

斜交矿山胎  
BIAS MINING TIRE

规格 Size	层级 PR	标准轮辋 Stand Rim	直径(mm) Overall Dia(mm)	断面宽(mm) Section Width(mm)	最大载重 Max Load(kg)		最大气压 Max Pressure(kpa)		重量(千克) Weight (kg)	装箱量 /40' GP QTY/40' HQ
					10km/h	50km/h	10km/h	50km/h		
11.00-20	18	8.00	1085	293	3650	3150	910	840	63	280
10.00-20	18	7.50	1055	278	3350	2900	910	840	55	290



# HQ004

斜交卡车胎  
BIAS TRUCK TIRE

规格 Size	层级 PR	标准轮辋 Stand Rim	直径(mm) Overall Dia(mm)	断面宽(mm) Section Width(mm)	最大载重 Max Load(kg)		最大气压 Max Pressure(kpa)		重量(千克) Weight (kg)	装箱量 /40' GP QTY/40' HQ
					10km/h	50km/h	10km/h	50km/h		
900-20	16	7.00	1018	259	2900	2500	880	810	44	370





# HQ006

## 斜交卡车胎 BIAS TRUCK TIRE



# HQ005

## 斜交卡车胎 BIAS TRUCK TIRE

规格 Size	层级 PR	标准轮辋 Stand Rim	直径(mm) Overall Dia(mm)	断面宽(mm) Section Width(mm)	最大载重 Max Load(kg)	最大气压 Max Pressure(kpa)
6.00-14	6	4.1/2J	680	170	580	320
6.00-14	8	4.1/2J	680	170	690	420
6.00-14	10	4.1/2J	680	170	800	530
6.00-15	8	4.50E	705	170	730	420
6.00-15	10	4.50E	705	170	825	530
6.00-16	6	4.50E	730	170	630	320
6.00-16	8	4.50E	730	170	750	420
6.00-16	10	4.50E	730	170	850	530
6.50-14	6	4.1/2J	705	180	670	320
6.50-14	8	4.1/2J	705	180	775	420
6.50-14	10	4.1/2J	705	180	900	530
6.50-15	6	4.50E	730	180	690	320
6.50-15	8	4.50E	730	180	825	420
6.50-15	10	4.50E	730	180	950	530
6.50-16	8	5.50F	750	185	730	320
6.50-16	8	5.50F	750	185	850	420
6.50-16	10	5.50F	750	185	975	530
6.50-16	12	5.50F	750	185	1060	630
7.00-15	6	5.50F	750	200	775	320
7.00-15	8	5.50F	750	200	900	420
7.00-15	10	5.50F	750	200	1030	530
7.00-15	12	5.50F	750	200	1150	630
7.00-16	6	5.50F	775	200	825	320
7.00-16	8	5.50F	775	200	975	420
7.00-16	10	5.50F	775	200	1090	530
7.00-16	12	5.50F	775	200	1215	630
7.00-16	14	5.50F	775	200	1320	730
7.50-15	8	6.00Q	780	215	1060	420
7.50-15	10	6.00Q	780	215	1215	530
7.50-15	12	6.00Q	780	215	1360	630
7.50-15	14	6.00Q	780	215	1450	730

规格 Size	层级 PR	标准轮辋 Stand Rim	直径(mm) Overall Dia(mm)	断面宽(mm) Section Width(mm)	最大载重 Max Load(kg)		最大气压 Max Pressure(kpa)		重量(千克) Weight (kg)	装箱量 /40' GP QTY/40' HQ
					10km/h	50km/h	10km/h	50km/h		
10.00-20	16	7.50	1055	278	3000	2650	810	740	50	320







# HQ007

斜交卡车胎  
BIAS TRUCK TIRE

规格 Size	层级 PR	标准轮辋 Stand Rim	直径(mm) Overall Dia(mm)	断面宽(mm) Section Width(mm)	最大载重 Max Load(kg)		最大气压 Max Pressure(kpa)		重量(千克) Weight (kg)	装箱量 /40' GP QTY/40' HQ
					10km/h	50km/h	10km/h	50km/h		
11.00-20	14	8.00	1065	293	3350	2900	810	300	45	280
7.50-16	14	6.00G	805	215	1695			760	20	760
7.50-16	14	6.00G	780	215	1060	925		420	18.5	770
7.50-16	14	6.00G	750	200	910			420	16	870



# HQ008

斜交卡车胎  
BIAS TRUCK TIRE

规格 Size	层级 PR	标准轮辋 Stand Rim	直径(mm) Overall Dia(mm)	断面宽(mm) Section Width(mm)	最大载重 Max Load(kg)		最大气压 Max Pressure(kpa)		重量(千克) Weight (kg)	装箱量 /40' GP QTY/40' HQ
					10km/h	50km/h	10km/h	50km/h		
7.50-16	8	6.00G	805	215	1120			420	25.5	540
7.50-16	10	6.00G	805	215	1250			530	25.5	540
7.50-16	12	6.00G	805	215	1400			630	25.5	540
7.50-16	14	6.00G	805	215	1500			730	25.5	540
8.25-16	10	6.50H	855	235	1360			420	22.47	445
8.25-16	12	6.50H	855	235	1550			530	22.47	445
8.25-16	14	6.50H	855	235	1700			630	22.47	445
8.25-16	16	6.50H	855	235	1800			730	22.47	445
7.50-20	14	6.0	935	215	1900			810	25.5	540
8.25-20	14	6.5	974	236	2240			810	29.13	445
8.25-20	16	6.5	974	236	2430			910	29.13	445
9.00-20	16	7.0	1018	259	2900			880	34.63	370
10.00-20	16	7.5	1055	278	3000			810	39.54	320
11.00-20	16	8.0	1085	293	3350			810	45.36	280
12.00-20	18	8.5	1125	315	3750			810	53.27	245



# HQ009

斜交卡车胎  
BIAS TRUCK TIRE

规格 Size	层级 PR	标准轮辋 Stand Rim	直径(mm) Overall Dia(mm)	断面宽(mm) Section Width(mm)	最大载重 Max Load(kg)		最大气压 Max Pressure(kpa)		重量(千克) Weight (kg)	装箱量 /40' GP QTY/40'HQ
					10km/h	50km/h	10km/h	50km/h		
500-12	12	3.50B	568	143	560	530	500	5	1780	

# HQ010

斜交农业胎  
OBLIQUE  
AGRICULTURAL TIRE



规格 Size	层级 PR	标准轮辋 Stand Rim	直径(mm) Overall Dia(mm)	断面宽(mm) Section Width(mm)	最高速度 Top Speed	最大载重 Max Load(kg)	最大气压 Max Pressure(kpa)
19.5L-24	10	DW16	1340	495	30	1925	170
11.00-16	10	W10L	970	315	30	1485	310
8.3-20	6	W7	895	210	30	695	240
9.5-24	6	W8	1050	240	30	940	210
8.3-24	6	W7	995	210	30	810	240
7.50-16	6	5.50F	810	205	30	650	210
6.50-16	6	5.00F	765	180	30	565	250
7.50-20	6	5.50F	910	205	30	760	210
6.00-16	6	4.50E	745	165	30	495	250
9.50-20	8	W8	950	240	30	955	280
6.00-16	10	4.50E	745	165	30	650	363
6.00-12	6	4.50E	640	165	30	405	250



# HQ011

斜交卡车胎  
BIAS TRUCK TIRE

规格 Size	层级 PR	标准轮辋 Stand Rim	直径(mm) Overall Dia(mm)	断面宽(mm) Section Width(mm)	最大载重 Max Load(kg)		重量(千克) Weight (kg)	装箱量 /40' GP QTY/40' HQ
					10km/h	10km/h		
10.00-20	16	7.50	1500	278	3000	810	39.54	320
9.00-20	16	7.00	1018	259	2900	880	34.53	370
8.25-16	14	6.50H	855	235	1700	630	22.47	650
7.50-20	14	6.00	935	215	1900	810	25.5	540
7.50-16	14	6.00G	805	215	1500	730	19.58	760
6.50-16	12	5.50F	750	185	1060	630	14.31	1000
6.50-15	10	4.50E	705	185	825	530	11.53	1300
6.00-13	6	4.50B	655	170	560	320	11.53	1300
6.00-13	8	4.50B	655	170	650	420	11.53	1300
7.50-16	8	6.00G	805	215	1120	420	19.58	760
7.50-16	10	6.00G	805	215	1250	530	19.58	760
7.50-16	12	6.00G	805	215	1400	630	19.58	760
8.25-16	10	8.50H	855	235	1360	420	22.47	650
8.25-16	12	8.50H	855	235	1550	530	22.47	650
8.25-16	16	8.50H	855	235	1800	730	22.47	650



# HQ012

斜交胎拖车胎  
OBLIQUE TRAILER TYRES

规格 Size	层级 PR	标准轮辋 Stand Rim	直径(mm) Overall Dia(mm)	断面宽(mm) Section Width(mm)	最大载重 Max Load(kg)		最大气压 Max Pressure(kpa)		重量(千克) Weight (kg)	装箱量 /40' GP QTY/40' HQ
					10km/h	50km/h	10km/h	50km/h		
825-15	14	6.50	840	235	4750	4300	3650	24	750	



# HQ015

斜交卡车胎  
BIAS TRUCK TIRE

规格 Size	层级 PR	标准轮辋 Stand Rim	直径(mm) Overall Dia(mm)	断面宽(mm) Section Width(mm)	最大载重 Max Load(kg)		最大气压 Max Pressure(kpa)		重量(千克) Weight (kg)	装箱量 /40' GP QTY/40' HQ
					10km/h	50km/h	10km/h	50km/h		
6.00-15	6	4.50E	705	170	615	545	320	9.96	1500	



# HQ016

斜交卡车胎  
BIAS TRUCK TIRE

规格 Size	层级 PR	直径(mm) Overall Dia(mm)	断面宽(mm) Section Width(mm)	最大载重 Max Load(kg)		最大气压 Max Pressure(kpa)		重量(千克) Weight (kg)	装箱量 /40' GP QTY/40' HQ
				10km/h	50km/h	10km/h	50km/h		
4.00-8	3.00D	415	112	215	250	3.5	2185		



# HQ017

斜交拖车胎  
**OBLIQUE  
TRAILER TYRES**

规格 Size	层级 PR	标准轮辋 Stand Rim	直径(mm) Overall Dia(mm)	断面宽(mm) Section Width(mm)	最大载重 Max Load(kg)		最大气压 Max Pressure(kpa)		重量(千克) Weight (kg)	装箱量 /40'GP QTY/40'HQ
					10km/h	50km/h	10km/h	50km/h		
10.00-20	14	7.50	1055	278	2800	2430	700	630	56	290

# HQ018

小型斜交  
工程机械轮胎



规格 Size	层级 PR	标准轮辋 Stand Rim	花纹深度 Tread Depth (mm)	最高速度 Top Speed	最大载重 Max Load (kg)	最大气压 Max Pressure (kpa)	充气后的外缘尺寸(mm) Inflated Tyre Dimension	
							断面宽 Section Width	外直径 Overall Diameter
20.5/7.0-16	12	8.50H	17	25	1980	320	340	940
20.5/7.0-16	14	8.50H	17	25	2925	350	340	940
14/90-16	14	6.50H	16	25	1120	26	282	900
14/90-16	16	6.50H	16	25	1245	290	282	900
16/90-16	12	8.50H	16	25	1245	390	285	905
15/90-16	14	8.50H	16	25	1955	390	283	900
12.00-16	16	6.5			3585	750	325	1145
11.00-16	16	6.5			3135	650	293	1105
10.5/65-16	12	6.5			2939	608	284	1094
10.00-16	16	6.5			2742	565	275	910
9.00-16	16	6.5			1955	630	255	890
8.25-16	16	6.5			1800	730	235	855
7.50-16	16	6.00G			1180	630	185	761
16/70-16	14	8.50H			1955	390	320	930
17.5-16	14	8.50H			1955	390	340	935
15/70-18	14	13			3115	360	390	960





# HQ019

工程机械轮胎  
ENGINEERING  
MACHINERY TYRE

规格 Size	层级 PR	标准轮辋 Stand Rim	花纹深度 Tread Depth (mm)	最高速度 Top Speed	最大载重 Max Load (kg)	最大气压 Max Pressure (kpa)	充气后的外缘尺寸(mm) Inflated Tyre Dimension	
							断面宽 Section Width	外直径 Overall Diameter
10-16.5(31x10-20)	8	8.25	14	10	1880	410	264	773
10-16.5(31x10-20)	10	8.25	14	10	2135	520	264	773
12-16.5(33x2-20)	10	9.75	17	10	2540	450	307	831
12-16.5(33x2-20)	12	9.75	17	10	2865	550	307	831
19.5L-24	10	DW16			1925	170	495	1340
17.5-25	12	14.00/1.5			5980	350	445	1350
20.5-25	12	17.00/2.0			6780	380	520	1490
23.5-25	16	19.5/2.5			9740	320	595	1615
14.00-24	12	10.00			7380	560	375	1370
13.00-24	12	10.00			6210	560	350	1300

# HQ020

工程机械轮胎  
ENGINEERING  
MACHINERY TYRE



规格 Size	层级 PR	标准轮辋 Stand Rim	花纹深度 Tread Depth (mm)	最高速度 Top Speed	最大载重 Max Load (kg)	最大气压 Max Pressure (kpa)	充气后的外缘尺寸(mm) Inflated Tyre Dimension	
							断面宽 Section Width	外直径 Overall Diameter
23.1-26	12	DW20	16.5	10	5150	200	595	1500
23.1-26	16	DW20	16.5	10	6150	200	595	1500