

COMPANY PROFILE

企业简介

山东沃森橡胶有限公司隶属于中国最大的轮胎成长型企业之一、东营市规模最大的侨属企业——山东华侨集团，位于山东大王经济开发区。公司创建于2003年，从事全钢子午胎、半钢子午胎、工程胎、叉车胎、实心胎的生产和销售。公司设备齐全，技术力量雄厚。

公司注重企业文化建设，逐渐形成了具有侨属企业特色的沃森文化体系，本着“以顾客需要为目标，以顾客满意为宗旨”的经营理念，坚持高起点、高标准、高质量，立足现实，着眼未来。2012年350万套全钢子午胎项目已全面投产，2014年5月高性能半钢子午胎投产运营。

公司生产的以沃森为主品牌的三十多种品牌产品以过硬的质量、良好的信誉畅销全国20多个省、市、自治区并出口美国、俄罗斯、加拿大、澳大利亚、欧洲、中东、东南亚等20多个国家和地区，深受用户青睐。

山东华侨集团沃森轮胎竭诚欢迎国内外新老客户莅临公司参观指导，建立长期共赢的合作伙伴关系！

Dongying Huaqiao rubber and plastic co., LTD is the largest overseas Chinese enterprise in Dongying city and also one of the biggest growing tire companies in China. located in Dawang economic development zone of Shandong province, Established in 2003, the company is mainly engaged in the production and management of half-steel radial tire, all-steel tires, OTR tires, forklift tire, solid tires with well-equipment and strong technical force.

The company is well-equipped and has strong technical force. It now has more than 600 sets of large and medium-sized equipment. Over the years, with the managing spirit of "customer's need as the goal, customer's satisfaction as the purpose", the company adheres the principles of high starting point, high standard and high quality, operating based on reality and focusing on the future. In 2012, 3.5 million sets of all steel radial tire projects had gone into full production. In May of 2014, high-performance half-steel radial tire production operations with hankook technical force.

With high quality and good credibility, over 30 types of products the company produced had been sold all over the country and exported to more than 20 countries and regions, like Australia, the U.S.A., Europe, Southeast Asia and etc. They are all favored by users.

We sincerely welcome domestic and foreign new and old customers to visit our group and build a long-term win-win partnership!

WOSEN 沃森
PCR TYRE





C199

● 产品特点 Product Characteristic

高耐磨及操纵性。
High wear resistance and control ability.

● 市场定位 Market Positioning

内销市场，以出租车及经济型家庭产品为销售对象。
Domestic market taking taxi and economical products of family as the sales object.



● 花纹特点 Pattern Feature



排水性 DRAINAGE

三组纵向沟槽设计，充分发挥湿地的排水性，提高了抓地力，增强了行驶中的安全性。

Three groups of longitudinal groove design fully play the wet drainage, enhancing gripping, improve the safety in driving.



耐磨性 WEAR RESISTANCE

超宽的行駛面加上耐磨的胎面，有效的增加了胎面的耐磨性。

Ultra wide road surface and wear resistance of tread, effectively add the tread wear resistance.



节油性 SAVING OIL

超强的胎面耐磨配方采用，较大的提高了耐磨性，高强的钢带层降低了轮胎的阻力从而降低了耗油。

Super tread formula wear-resisting, improve high wear resistance, high strength steel strip layer reduce the wheel resistance, in order to reduce the fuel consumption.



操纵性 HANDLING

流线型横向沟槽的设计除具有卓越的排水性，提高湿地路面的抓地力，增强了高速行驶更加稳定。

The design of stream-lined transverse groove has excellent drainage water, improve the grip of the wetland surface, enhanced high speed which is more stable.

Inch	Size	Li/Sr	Reinf	Measuring Rim(Inch)	Overall Diameter		Section Width		Max. Pressure		Max. Load		UTQG			Mud+Snow
					mm	mm	Kpa	Psi	Kg	Lbs	Wear	Trac.	Temp.			
13	165/70R13	79T		5.0	562	170	300	44	437	963	580	A	A	M+S		
	175/70R13	82T		5.0	576	177	300	44	475	1047	580	A	A	M+S		
	185/70R13	86T		5.5	590	189	300	44	530	1168	580	A	A	M+S		
14	165/70R14	81T		5.0	588	170	300	44	462	1019	580	A	A	M+S		
	185/60R14	82T		5.5	578	189	300	44	475	1047	580	A	A	M+S		
	185/60R14	82H		5.5	578	189	300	44	475	1047	580	A	A	M+S		
	185/60R14	86H	XL	5.5	578	189	340	50	530	1168	580	A	A	M+S		
	195/60R14	86T		6.0	590	201	300	44	530	1168	580	A	A	M+S		
	195/60R14	86H		6.0	590	201	300	44	530	1168	580	A	A	M+S		
15	195/60R14	90H	XL	6.0	590	201	340	50	600	1323	580	A	A	M+S		
	185/65R15	88H		5.5	621	189	300	44	560	1235	580	A	A	M+S		
	185/65R15	92H	XL	5.5	621	189	340	50	630	1389	580	A	A	M+S		
	195/60R15	92H	XL	6.0	615	201	340	50	630	1389	580	A	A	M+S		
	195/65R15	95H	XL	6.0	635	201	340	50	690	1521	580	A	A	M+S		
16	205/65R15	99H	XL	6.0	647	209	340	50	775	1709	580	A	A	M+S		
	205/55R16	94H	XL	6.5	632	214	340	50	670	1477	580	A	A	M+S		

H368



● 产品特征 Product Characteristic

高性能舒适及安全兼顾。
High performance comfort and safety consideration.

● 市场定位 Market Positioning

高性能舒适产品。
High performance and comfortable products.

● 花纹特点 Pattern Feature



防滑性 SKID RESISTANCE

合理的4条沟槽设计提高了轮胎的防滑性，优秀的排水性为你在雨天行驶保驾护航。
Reasonable four groove design improved the tire blowout, Smoothness and excellent drainage in the rain for you.



操纵性 HANDLING

中心块与边部横向沟槽设计，操控性及制动性加强，并提高湿地路面的抓地力。
Center block with transverse groove design of edge, and improve handling and braking, improve wetland road grip.



安全性 SECURITY

不对称花纹设计,提高了转向时安全稳定性。
Asymmetric pattern design, enhancing the safety steering, Stability.



静音性 MUTE

优化节距宽度与节距排列及节距位移的设计，整体上形成宁静的驾驶感，有效降低轮胎行驶中的噪音。
Optimize the pitch width and pitch and pitch displacement design, overall form driving feeling of tranquility, effective reduce the noise in the tyre drive.

Inch	Size	Li/Sr	Reinf	Measuring Rim(Inch)	Overall Diameter	Section Width	Max Pressure		Max Load		UTQG			Mud-Snow	
					mm	mm	Kpa	Psi	Kg	Lbs	Wear	Trac.	Temp.	M+S	
14	165/65R14	79T		5.0	570	170	300	44	437	963	450	A	A	M+S	
	175/65R14	82T		5.0	584	177	300	44	475	1047	450	A	A	M+S	
	175/65R14	82H		5.0	584	177	300	44	475	1047	450	A	A	M+S	
	175/65R14	86T	XL	5.0	584	177	340	50	530	1168	450	A	A	M+S	
	185/55R14	80T		6.0	560	194	300	44	450	992	450	A	A	M+S	
	185/60R14	82H		5.5	578	189	300	44	475	1047	450	A	A	M+S	
	185/65R14	86H		5.5	596	189	300	44	530	1168	450	A	A	M+S	
	195/60R14	86H		6.0	590	201	300	44	530	1168	450	A	A	M+S	
	195/65R14	89H		6.0	610	201	300	44	580	1279	450	A	A	M+S	
15	185/55R15	82H		6.0	585	194	300	44	475	1047	450	A	A	M+S	
	185/65R15	88H		5.5	621	189	300	44	560	1235	450	A	A	M+S	
	185/65R15	92H	XL	5.5	621	189	340	50	630	1389	450	A	A	M+S	
	195/45R15	78V		6.5	557	195	300	44	425	937	450	A	A	M+S	
	195/50R15	82V		6.0	577	201	300	44	475	1047	450	A	A	M+S	
	195/55R15	85H		6.0	595	201	300	44	515	1135	450	A	A	M+S	
	195/55R15	85V		6.0	595	201	300	44	515	1135	450	A	A	M+S	
	195/60R15	88V		6.0	615	201	300	44	560	1235	450	A	A	M+S	
	195/65R15	91V		6.0	635	201	300	44	615	1356	450	A	A	M+S	
	205/55R15	88V		6.5	607	214	300	44	560	1235	450	A	A	M+S	
	205/60R15	91H		6.0	627	209	300	44	615	1356	450	A	A	M+S	
	205/65R15	94H		6.0	647	209	300	44	670	1477	450	A	A	M+S	
	215/60R15	94V		6.5	639	221	300	44	670	1477	450	A	A	M+S	
	215/65R15	96V		6.5	661	221	300	44	710	1565	450	A	A	M+S	
	215/70R15	98H		6.5	683	221	300	44	750	1653	450	A	A	M+S	
16	195/45R16	80V		6.5	582	195	300	44	450	992	450	A	A	M+S	
	195/50R16	84V		6.0	602	201	300	44	500	1102	450	A	A	M+S	
	195/55R16	87V		6.0	620	201	300	44	545	1201	450	A	A	M+S	
	205/45R16	83V		7.0	590	206	300	44	487	1074	450	A	A	M+S	
	205/55R16	94V	XL	6.5	632	214	340	50	670	1477	450	A	A	M+S	
	205/60R16	92V		6.0	652	209	300	44	630	1389	450	A	A	M+S	
	215/60R16	95V		6.5	664	221	300	44	690	1521	450	A	A	M+S	
	215/65R16	98V		6.5	686	221	300	44	750	1653	450	A	A	M+S	
	225/60R16	98V		6.5	676	228	300	44	750	1653	450	A	A	M+S	
	235/60R16	100V		7.0	688	240	300	44	800	1764	450	A	A	M+S	
	17	215/45R17	87H		7.0	626	213	300	44	545	1201	450	A	A	M+S
		215/45R17	87W		7.0	626	213	300	44	545	1201	450	A	A	M+S
215/45R17		91W	XL	7.0	626	213	340	50	615	1356	450	A	A	M+S	
215/55R17		94W		7.0	668	226	300	44	670	1477	450	A	A	M+S	
225/45R17		91H		7.5	634	225	300	44	615	1356	450	A	A	M+S	
225/45R17		91W		7.5	634	225	300	44	615	1356	450	A	A	M+S	
225/45R17		94W	XL	7.5	634	225	340	50	670	1477	450	A	A	M+S	
225/55R17		97W		7.0	680	233	300	44	730	1609	450	A	A	M+S	
225/60R17		99W		6.5	702	228	300	44	775	1709	450	A	A	M+S	
225/65R17		102V		6.5	724	228	300	44	850	1874	450	A	A	M+S	
235/45R17		94H		8.0	644	236	300	44	670	1477	450	A	A	M+S	
235/45R17		94W		8.0	644	236	300	44	670	1477	450	A	A	M+S	
235/45R17	97W	XL	8.0	644	236	340	50	730	1609	450	A	A	M+S		
235/55R17	99V		7.5	690	245	300	44	775	1709	450	A	A	M+S		

H218



● 产品特点 Product Characteristic

经济型、灵活型、节油型兼顾。
The economical, flexible, more fuel-efficient consideration.

● 市场定位 Market Positioning

内销+外销市场。
Domestic + Export markets.

● 花纹特点 Pattern Feature



排水性 DRAINAGE

三组纵向沟槽设计，充分发挥湿地的排水性，提高了抓地力，提高了湿地路面稳定性。
Three groups of longitudinal groove design fully play wet land drainage, improve the grip, improved the wet road surface stability.



制动性 BRAKE

胎面防滑钢片设计，确保在不同环境轮胎行驶的稳定性和同时增强了花块的散热性，提高轮胎的加速性及刹车制动性。
Tread antiskid design, ensure the wheel tire driving stability in different environment, in the same time enhances heat resistance of the flower piece, enhance the acceleration of the tire and brake.



灵活性 FLEXIBILITY

较小的接地轮廓设计有效的提高了转弯中灵活性，并降低了油耗。
The smaller ground contour design effectively improves the flexibility of the turn and reduce the fuel consumption.

Inch	Size	Li/Sr	Reinl	Measuring Rim(Inch)	Overall Diameter	Section Width	Max Pressure		Max Load		UTQG			Mud+Snow
					mm	mm	Kpa	Psi	Kg	Lbs	Wear	Trac.	Temp.	
13	145/80R13	75T		4.0	652	145	300	44	387	853	450	A	A	M+S
	155/65R13	73T		4.5	532	157	300	44	365	805	450	A	A	M+S
	155/65R13	73H		4.5	532	157	300	44	365	805	450	A	A	M+S
	155/70R13	75T		4.5	548	157	300	44	387	853	450	A	A	M+S
	155/80R13	79T		4.5	578	157	300	44	437	963	450	A	A	M+S
	165/65R13	77T		5.0	544	170	300	44	412	908	450	A	A	M+S
	165/70R13	79T		5.0	562	170	300	44	437	963	450	A	A	M+S
	165/70R13	83T	XL	5.0	562	170	340	50	487	1074	450	A	A	M+S
	165/80R13	83T		4.5	594	165	300	44	487	1074	450	A	A	M+S
	175/70R13	82T		5.0	576	177	300	44	475	1047	450	A	A	M+S
185/70R13	86T		5.5	590	189	300	44	530	1168	450	A	A	M+S	
14	165/60R14	75T		5.0	554	170	300	44	387	853	450	A	A	M+S
	165/70R14	81T		5.0	588	170	300	44	462	1019	450	A	A	M+S
	165/70R14	85T	XL	5.0	588	170	340	50	515	1135	450	A	A	M+S
	175/65R14	82T		5.0	584	177	300	44	475	1047	450	A	A	M+S
	175/65R14	82H		5.0	584	177	300	44	475	1047	450	A	A	M+S
	175/65R14	86T	XL	5.0	584	177	340	50	530	1168	450	A	A	M+S
	175/70R14	84T		5.0	602	177	300	44	500	1102	450	A	A	M+S
	175/70R14	84H		5.0	602	177	300	44	500	1102	450	A	A	M+S
	175/70R14	88T	XL	5.0	602	177	340	50	560	1235	450	A	A	M+S
	185/70R14	88T		5.5	616	189	300	44	560	1235	450	A	A	M+S
185/70R14	88H		5.5	616	189	300	44	560	1235	450	A	A	M+S	
195/70R14	91T		6.0	630	201	300	44	615	1356	450	A	A	M+S	
205/70R14	98T	XL	6.0	644	209	340	50	750	1653	450	A	A	M+S	
205/70R14	98H	XL	6.0	644	209	340	50	750	1653	450	A	A	M+S	
15	205/70R15	96T		6.0	689	209	300	44	710	1565	450	A	A	M+S
16	215/60R16	95H		6.5	664	221	300	44	690	1521	450	A	A	M+S
	215/60R16	95V		6.5	664	221	300	44	690	1521	450	A	A	M+S
	225/60R16	98H		6.5	676	228	300	44	750	1653	450	A	A	M+S
	225/60R16	98V		6.5	676	228	300	44	750	1653	450	A	A	M+S



S100

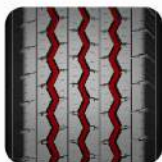
● 产品特点 Product Characteristic

耐磨性强、排水性优良。
High wear resistance, and good drainage.

● 市场定位 Market Positioning

小型商用车使用。
Almost the same.

● 花纹特点 Pattern Feature



排水性 DRAINAGE

三组纵向经典曲折沟槽设计，充分发挥轮胎驱动力，提高轮胎抓地力。
Three groups of longitudinal groove design fully play the classic twists and tyre drive, improve the tire grip.



耐磨性 RESISTANCE TO WEAR

特殊的胎面配方，提高了耐磨性；流星式钢片加上动感的沟槽设计，增强了花纹的美感。
Special tread formula, to improve the wear resistance; A shooting star, type of sheet steel and the groove design, dynamic enhanced, the pattern of beauty.



承载性 LOADING

合理的轮廓设计与加强的材料使用保证了轮胎的超强承载力。
Contour design and strengthen the material within the reasonable use ensure strong bearing capacity of the tire.



WOSEN 沃森

Inch	Size	Ply Rating	LI	Speed Rating	Measuring Rim(Inch)	Overall Diameter	Section width	Max Load				Inflation Pressure	
								Kg		Lbs		Kpa	Psi
								mm	mm	Single	Dual		
14	185R14C	8	102/100	Q	5.50	650	188	850	800	1874	1764	450	65
	195R14C	8	106/104	Q	5.50	666	198	950	900	2094	1984	450	65
15	195R15C	8	106/104	Q	5.50	693	198	950	900	2094	1984	450	65